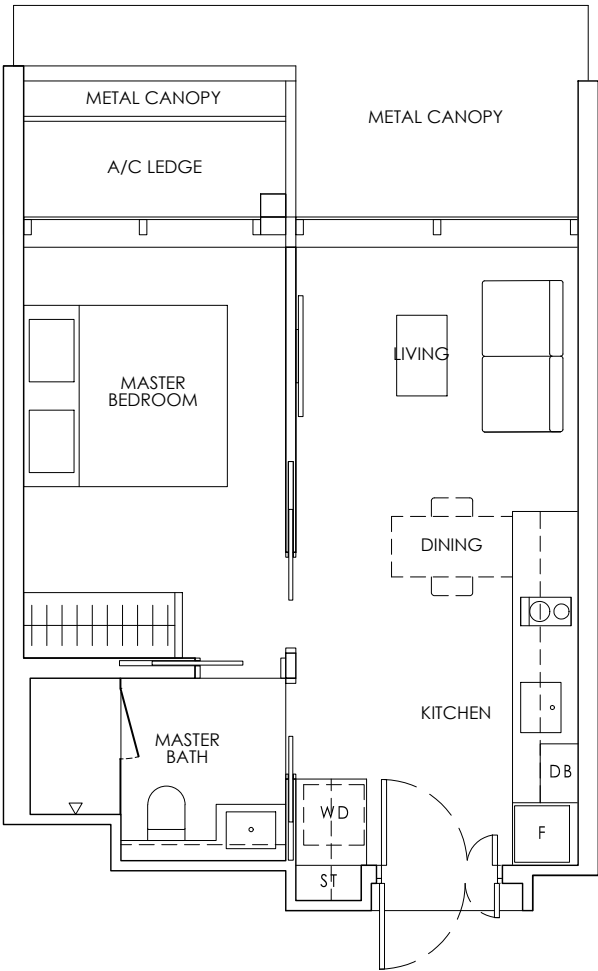




# 1-BEDROOM

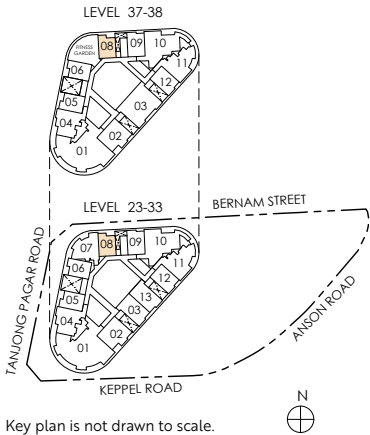
Type A1  
40 sq m / 431 sq ft

#23-08 to #33-08  
#37-08 to #38-08



Legend (where applicable)									
DB	Distribution Board	WD	Washer cum Dryer	W/D	Washer and Dryer	F	Fridge	WC	Water Closet
ST	Storage	HS	Household Shelter	A/C	Air-Conditioner	*	Mirror Image		

Strata area includes air-conditioner (A/C) ledge, balcony and strata void where applicable. Metal canopy is not included in the strata area. All floor plans, areas and measurements stated herein are approximate only and are subject to final survey. Please refer to the key plan for orientation. The plans are subject to change as may be required by the relevant authorities. The balcony shall not be enclosed unless with the approved balcony screen, more particularly illustrated under the header "Approved Balcony Screen". Please refer to the letter containing the Particulars, Documents and Information (PDI) relating to the unit and the development, for the area breakdown and floor plan relating to the unit you intend to purchase. The Sale and Purchase Agreement contains the entire agreement between the developer and the purchaser and supersedes and cancels in all respects all previous representations, warranties, promises, inducements or statements of intention, whether written or oral made by the developer and/or the developer's agent(s) which are not embodied in the Sale and Purchase Agreement.



Key plan is not drawn to scale.

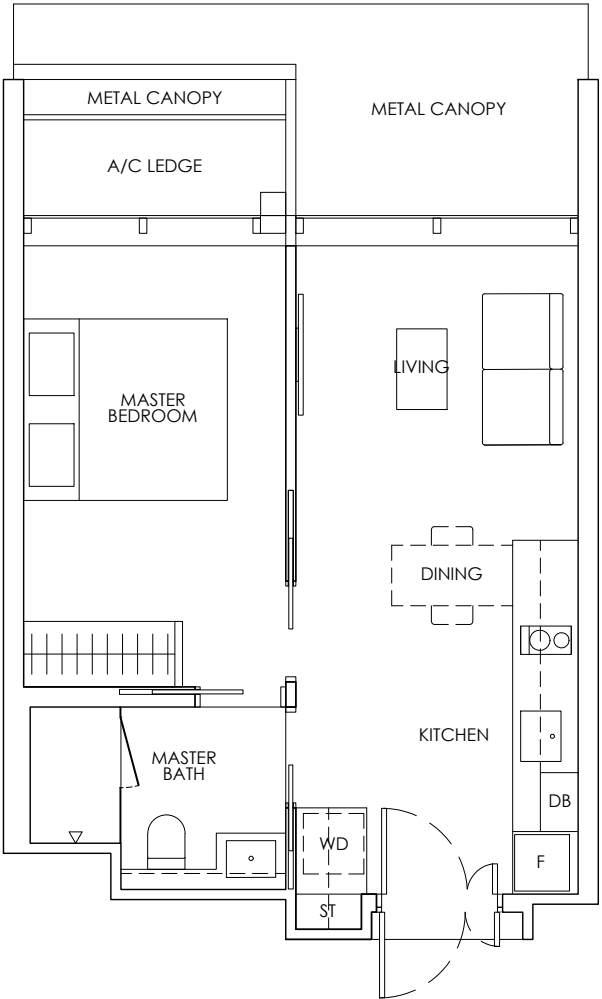
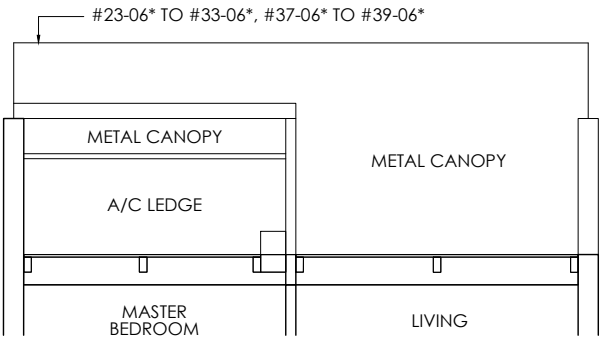


# 1-BEDROOM

**Type A2**

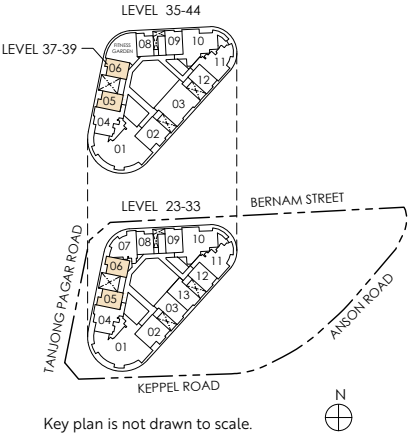
**42 sq m / 452 sq ft**

#23-05 to #33-05  
#35-05 to #44-05  
#23-06\* to #33-06\*  
#37-06\* to #39-06\*



Legend (where applicable)									
DB	Distribution Board	WD	Washer cum Dryer	W/D	Washer and Dryer	F	Fridge	WC	Water Closet
ST	Storage	HS	Household Shelter	A/C	Air-Conditioner	*	Mirror Image		

Strata area includes air-conditioner (A/C) ledge, balcony and strata void where applicable. Metal canopy is not included in the strata area. All floor plans, areas and measurements stated herein are approximate only and are subject to final survey. Please refer to the key plan for orientation. The plans are subject to change as may be required by the relevant authorities. The balcony shall not be enclosed unless with the approved balcony screen, more particularly illustrated under the header "Approved Balcony Screen". Please refer to the letter containing the Particulars, Documents and Information (PDI) relating to the unit and the development, for the area breakdown and floor plan relating to the unit you intend to purchase. The Sale and Purchase Agreement contains the entire agreement between the developer and the purchaser and supersedes and cancels in all respects all previous representations, warranties, promises, inducements or statements of intention, whether written or oral made by the developer and/or the developer's agent(s) which are not embodied in the Sale and Purchase Agreement.



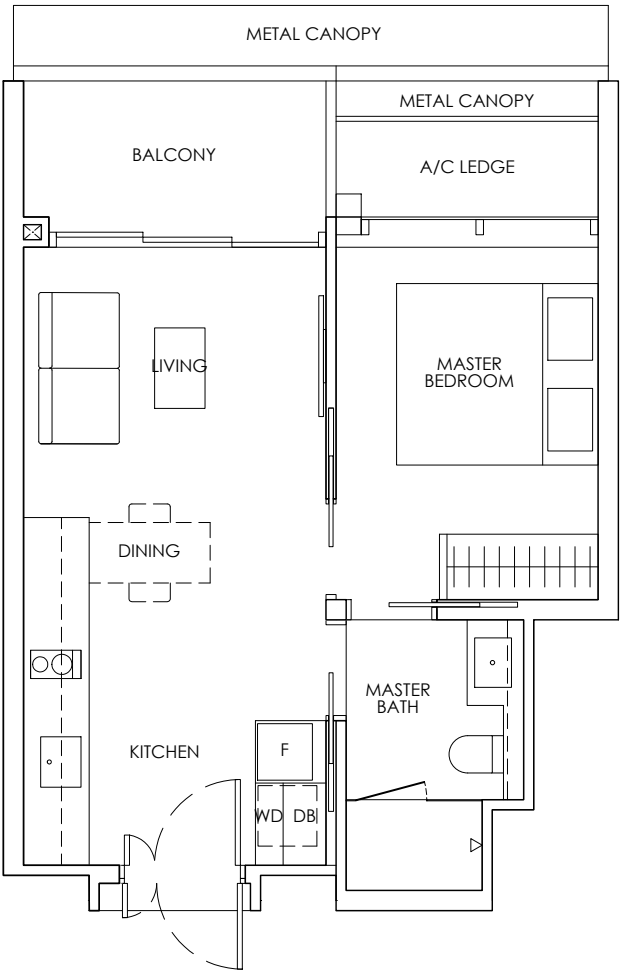
Key plan is not drawn to scale.



# 1-BEDROOM

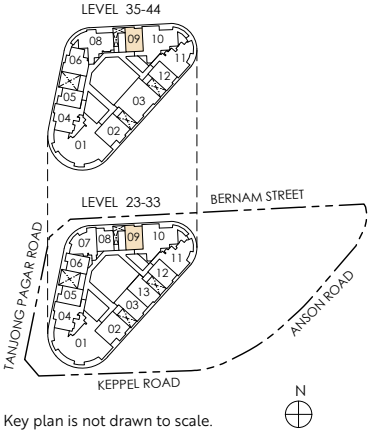
**Type A3**  
**44 sq m / 474 sq ft**

#23-09 to #33-09  
#35-09 to #44-09



Legend (where applicable)									
DB	Distribution Board	WD	Washer cum Dryer	W/D	Washer and Dryer	F	Fridge	WC	Water Closet
ST	Storage	HS	Household Shelter	A/C	Air-Conditioner	*	Mirror Image		

Strata area includes air-conditioner (A/C) ledge, balcony and strata void where applicable. Metal canopy is not included in the strata area. All floor plans, areas and measurements stated herein are approximate only and are subject to final survey. Please refer to the key plan for orientation. The plans are subject to change as may be required by the relevant authorities. The balcony shall not be enclosed unless with the approved balcony screen, more particularly illustrated under the header "Approved Balcony Screen". Please refer to the letter containing the Particulars, Documents and Information (PDI) relating to the unit and the development, for the area breakdown and floor plan relating to the unit you intend to purchase. The Sale and Purchase Agreement contains the entire agreement between the developer and the purchaser and supersedes and cancels in all respects all previous representations, warranties, promises, inducements or statements of intention, whether written or oral made by the developer and/or the developer's agent(s) which are not embodied in the Sale and Purchase Agreement.



Key plan is not drawn to scale.

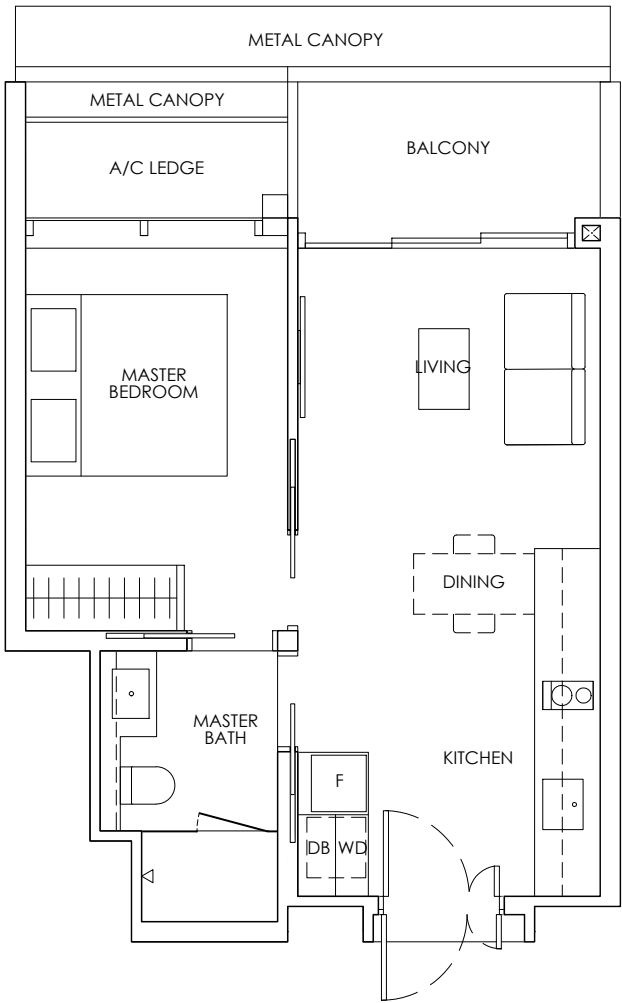


# 1-BEDROOM

**Type A4**

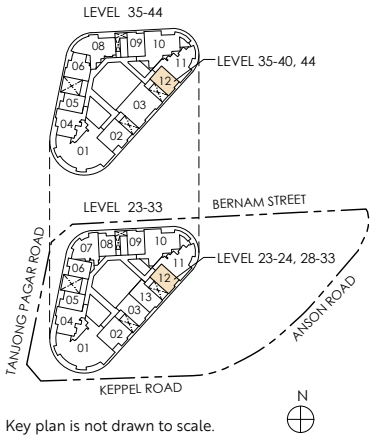
**46 sq m / 495 sq ft**

#23-12 to #24-12  
#28-12 to #33-12  
#35-12 to #40-12  
#44-12



Legend (where applicable)									
DB	Distribution Board	WD	Washer cum Dryer	W/D	Washer and Dryer	F	Fridge	WC	Water Closet
ST	Storage	HS	Household Shelter	A/C	Air-Conditioner	*	Mirror Image		

Strata area includes air-conditioner (A/C) ledge, balcony and strata void where applicable. Metal canopy is not included in the strata area. All floor plans, areas and measurements stated herein are approximate only and are subject to final survey. Please refer to the key plan for orientation. The plans are subject to change as may be required by the relevant authorities. The balcony shall not be enclosed unless with the approved balcony screen, more particularly illustrated under the header "Approved Balcony Screen". Please refer to the letter containing the Particulars, Documents and Information (PDI) relating to the unit and the development, for the area breakdown and floor plan relating to the unit you intend to purchase. The Sale and Purchase Agreement contains the entire agreement between the developer and the purchaser and supersedes and cancels in all respects all previous representations, warranties, promises, inducements or statements of intention, whether written or oral made by the developer and/or the developer's agent(s) which are not embodied in the Sale and Purchase Agreement.



Key plan is not drawn to scale.

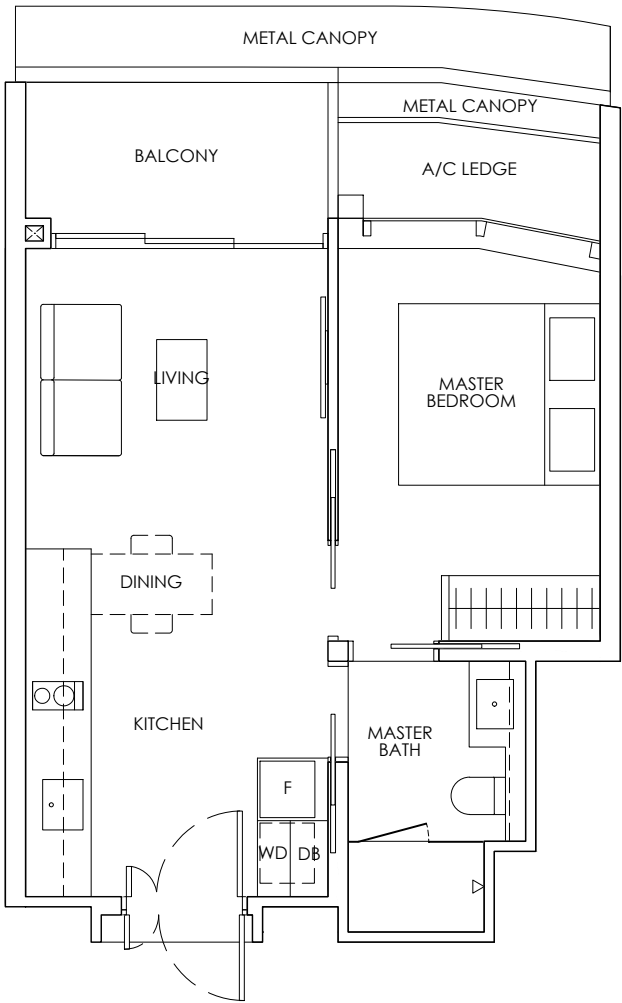


# 1-BEDROOM

Type A5

46 sq m / 495 sq ft

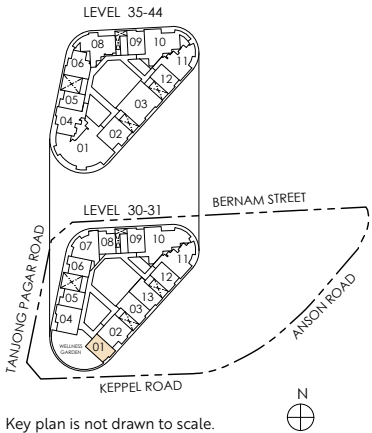
#30-01 to #31-01



**Legend (where applicable)**

<b>DB</b> Distribution Board	<b>WD</b> Washer cum Dryer	<b>W/D</b> Washer and Dryer	<b>F</b> Fridge	<b>WC</b> Water Closet
<b>ST</b> Storage	<b>HS</b> Household Shelter	<b>A/C</b> Air-Conditioner	<b>*</b> Mirror Image	

Strata area includes air-conditioner (A/C) ledge, balcony and strata void where applicable. Metal canopy is not included in the strata area. All floor plans, areas and measurements stated herein are approximate only and are subject to final survey. Please refer to the key plan for orientation. The plans are subject to change as may be required by the relevant authorities. The balcony shall not be enclosed unless with the approved balcony screen, more particularly illustrated under the header "Approved Balcony Screen". Please refer to the letter containing the Particulars, Documents and Information (PDI) relating to the unit and the development, for the area breakdown and floor plan relating to the unit you intend to purchase. The Sale and Purchase Agreement contains the entire agreement between the developer and the purchaser and supersedes and cancels in all respects all previous representations, warranties, promises, inducements or statements of intention, whether written or oral made by the developer and/or the developer's agent(s) which are not embodied in the Sale and Purchase Agreement.

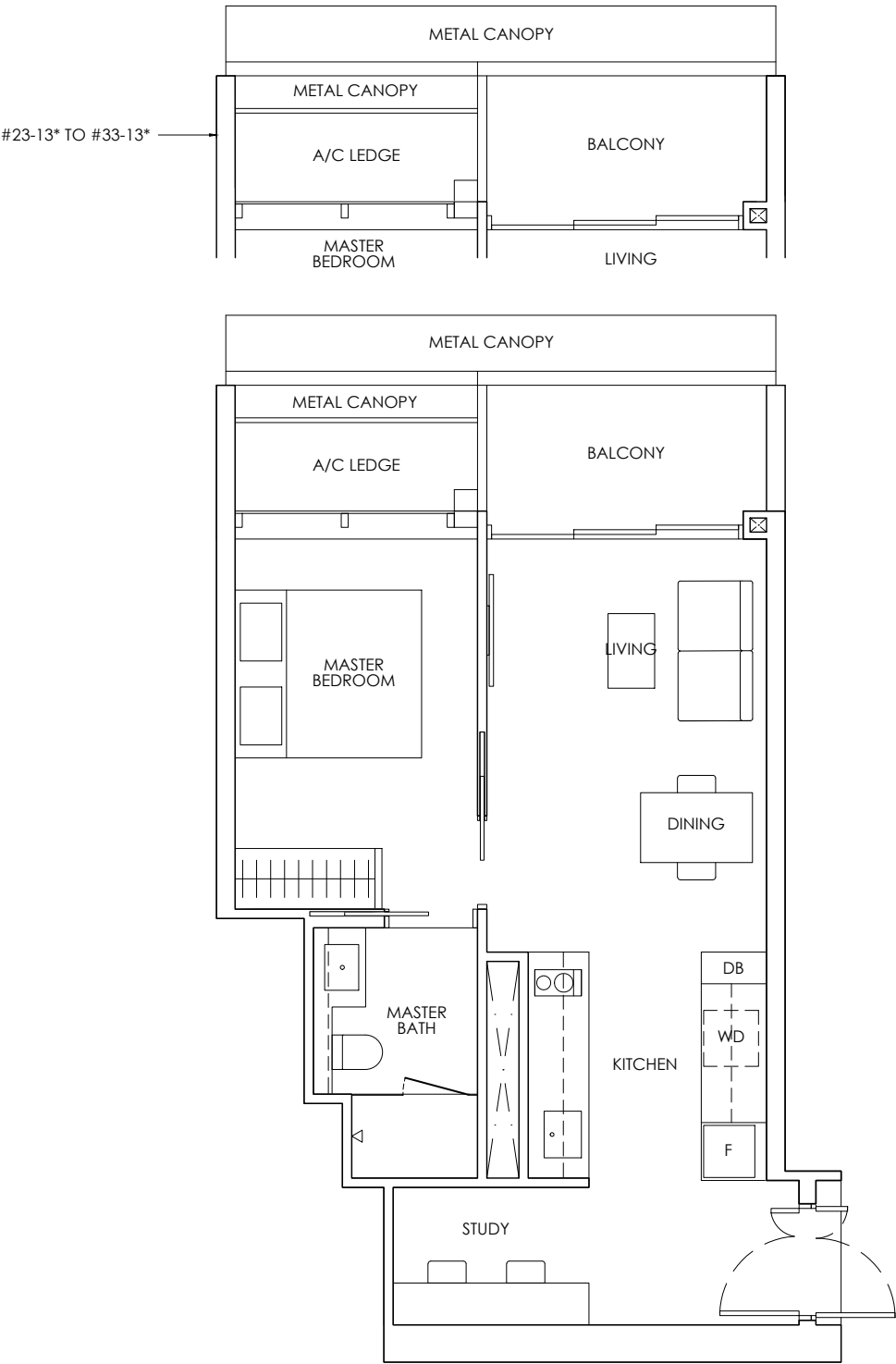


Key plan is not drawn to scale.

# 1-BEDROOM + STUDY

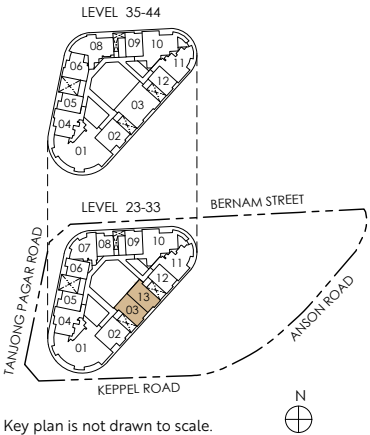
Type AS1  
54 sq m / 581 sq ft

#23-03 to #33-03  
#23-13\* to #33-13\*



Legend (where applicable)					
DB	Distribution Board	WD	Washer cum Dryer	W/D	Washer and Dryer
ST	Storage	HS	Household Shelter	A/C	Air-Conditioner
				F	Fridge
				*	Mirror Image
				WC	Water Closet

Strata area includes air-conditioner (A/C) ledge, balcony and strata void where applicable. Metal canopy is not included in the strata area. All floor plans, areas and measurements stated herein are approximate only and are subject to final survey. Please refer to the key plan for orientation. The plans are subject to change as may be required by the relevant authorities. The balcony shall not be enclosed unless with the approved balcony screen, more particularly illustrated under the header "Approved Balcony Screen". Please refer to the letter containing the Particulars, Documents and Information (PDI) relating to the unit and the development, for the area breakdown and floor plan relating to the unit you intend to purchase. The Sale and Purchase Agreement contains the entire agreement between the developer and the purchaser and supersedes and cancels in all respects all previous representations, warranties, promises, inducements or statements of intention, whether written or oral made by the developer and/or the developer's agent(s) which are not embodied in the Sale and Purchase Agreement.



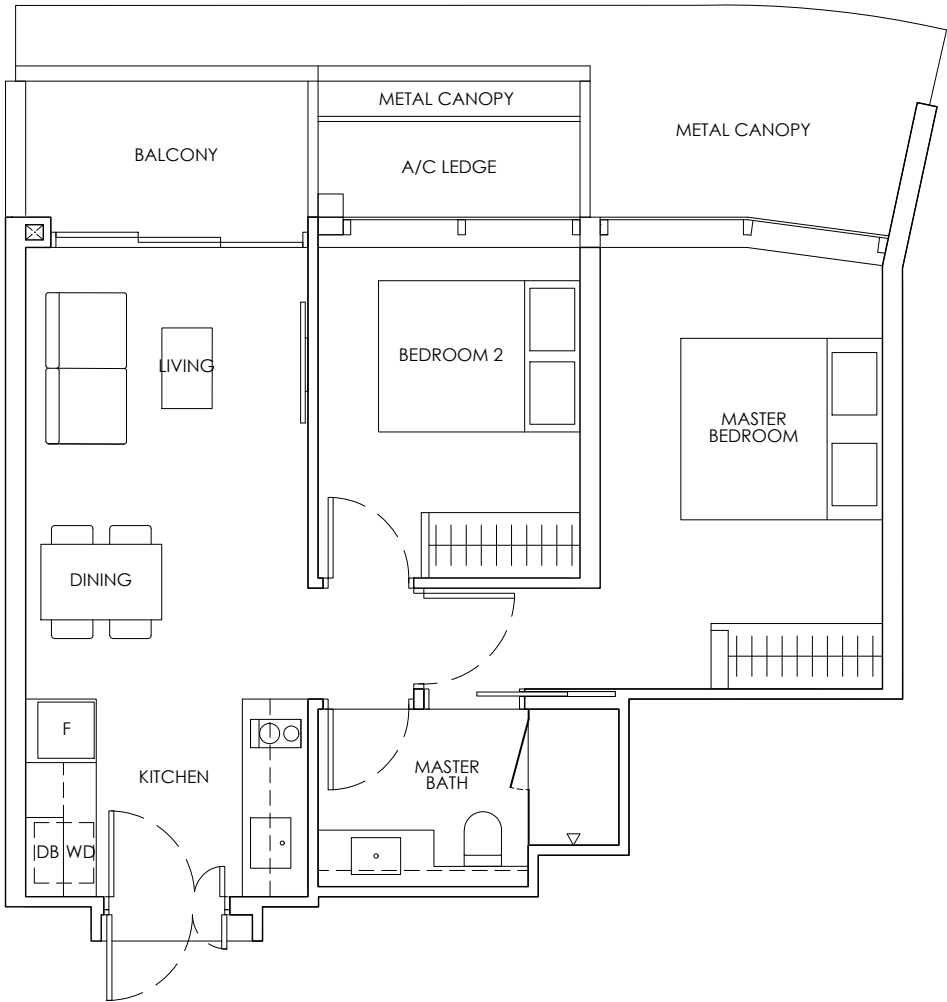
Key plan is not drawn to scale.



# 2-BEDROOM

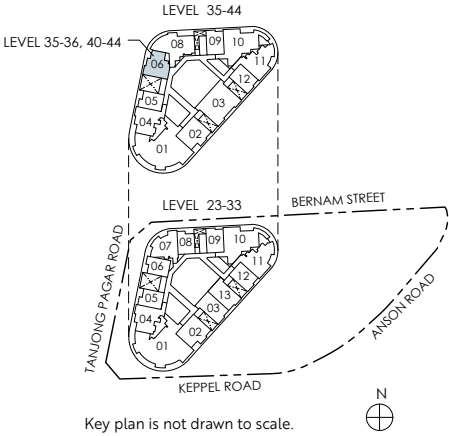
Type B1  
60 sq m / 646 sq ft

#35-06 to #36-06  
#40-06 to #44-06



Legend (where applicable)									
DB	Distribution Board	WD	Washer cum Dryer	W/D	Washer and Dryer	F	Fridge	WC	Water Closet
ST	Storage	HS	Household Shelter	A/C	Air-Conditioner	*	Mirror Image		

Strata area includes air-conditioner (A/C) ledge, balcony and strata void where applicable. Metal canopy is not included in the strata area. All floor plans, areas and measurements stated herein are approximate only and are subject to final survey. Please refer to the key plan for orientation. The plans are subject to change as may be required by the relevant authorities. The balcony shall not be enclosed unless with the approved balcony screen, more particularly illustrated under the header "Approved Balcony Screen". Please refer to the letter containing the Particulars, Documents and Information (PDI) relating to the unit and the development, for the area breakdown and floor plan relating to the unit you intend to purchase. The Sale and Purchase Agreement contains the entire agreement between the developer and the purchaser and supersedes and cancels in all respects all previous representations, warranties, promises, inducements or statements of intention, whether written or oral made by the developer and/or the developer's agent(s) which are not embodied in the Sale and Purchase Agreement.

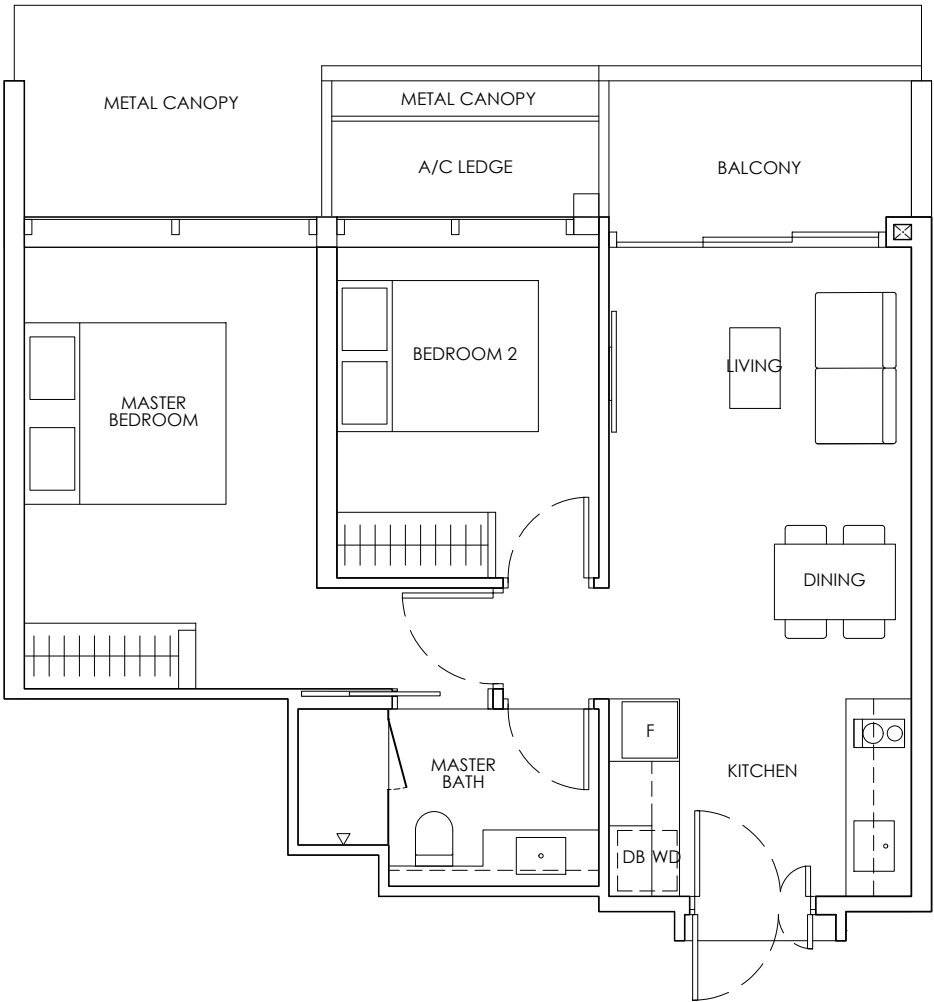


Key plan is not drawn to scale.

# 2-BEDROOM

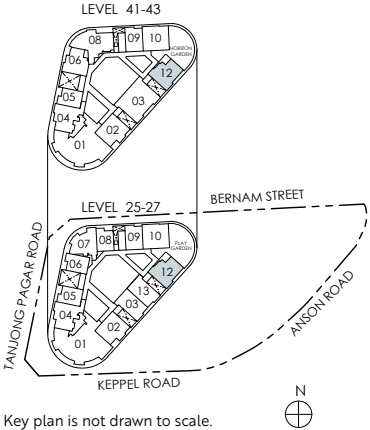
Type B2  
63 sq m / 678 sq ft

#25-12 to #27-12  
#41-12 to #43-12



Legend (where applicable)									
DB	Distribution Board	WD	Washer cum Dryer	W/D	Washer and Dryer	F	Fridge	WC	Water Closet
ST	Storage	HS	Household Shelter	A/C	Air-Conditioner	*	Mirror Image		

Strata area includes air-conditioner (A/C) ledge, balcony and strata void where applicable. Metal canopy is not included in the strata area. All floor plans, areas and measurements stated herein are approximate only and are subject to final survey. Please refer to the key plan for orientation. The plans are subject to change as may be required by the relevant authorities. The balcony shall not be enclosed unless with the approved balcony screen, more particularly illustrated under the header "Approved Balcony Screen". Please refer to the letter containing the Particulars, Documents and Information (PDI) relating to the unit and the development, for the area breakdown and floor plan relating to the unit you intend to purchase. The Sale and Purchase Agreement contains the entire agreement between the developer and the purchaser and supersedes and cancels in all respects all previous representations, warranties, promises, inducements or statements of intention, whether written or oral made by the developer and/or the developer's agent(s) which are not embodied in the Sale and Purchase Agreement.



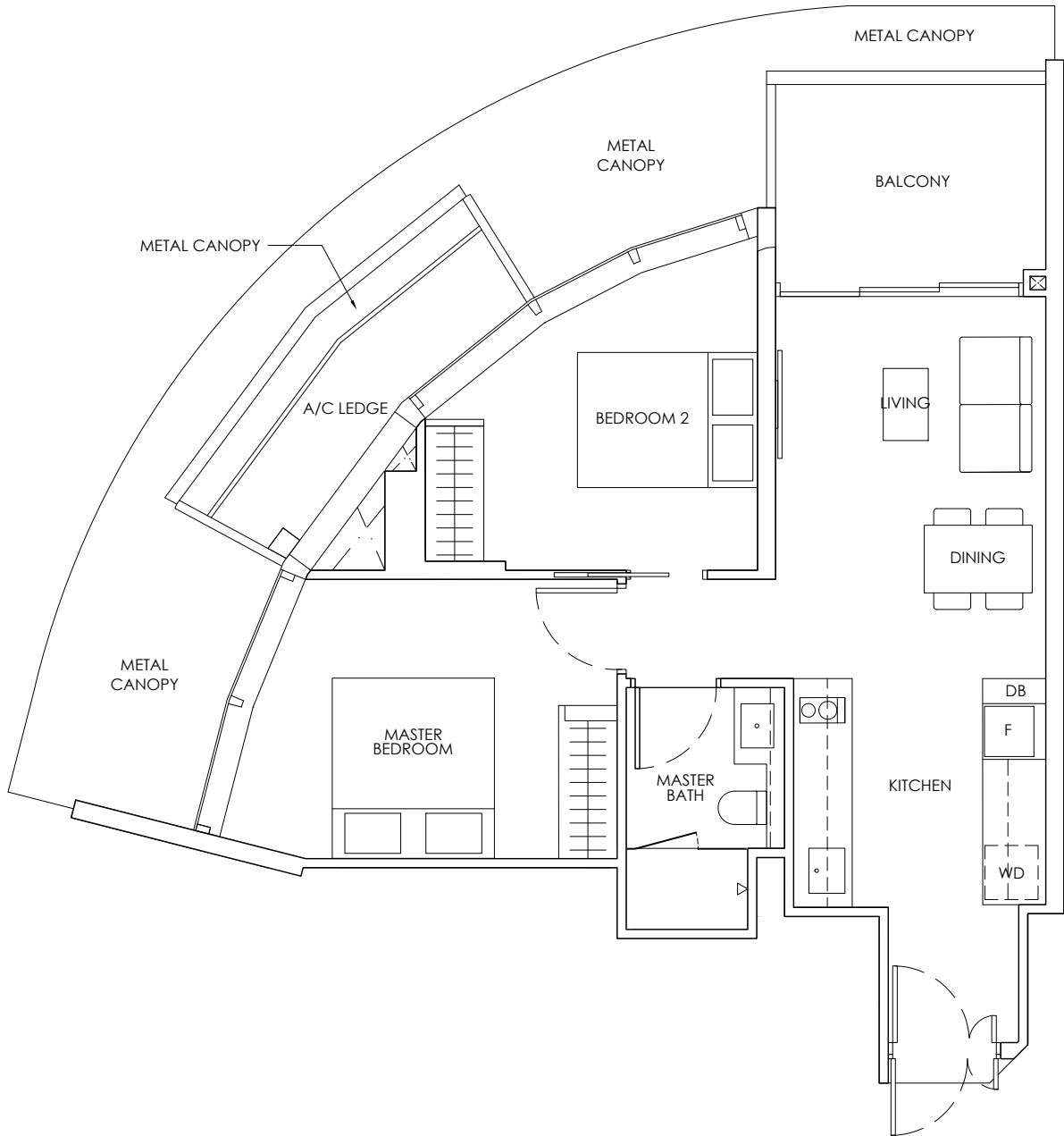
Key plan is not drawn to scale.



# 2-BEDROOM

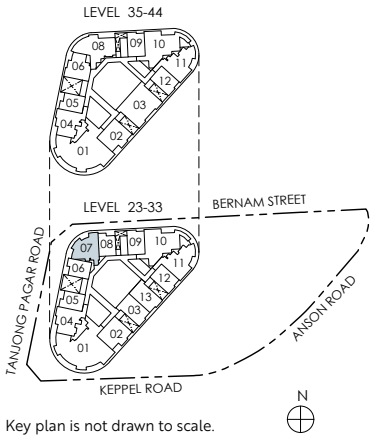
Type B3  
70 sq m / 753 sq ft

#23-07 to #33-07



Legend (where applicable)									
DB	Distribution Board	WD	Washer cum Dryer	W/D	Washer and Dryer	F	Fridge	WC	Water Closet
ST	Storage	HS	Household Shelter	A/C	Air-Conditioner	*	Mirror Image		

Strata area includes air-conditioner (A/C) ledge, balcony and strata void where applicable. Metal canopy is not included in the strata area. All floor plans, areas and measurements stated herein are approximate only and are subject to final survey. Please refer to the key plan for orientation. The plans are subject to change as may be required by the relevant authorities. The balcony shall not be enclosed unless with the approved balcony screen, more particularly illustrated under the header "Approved Balcony Screen". Please refer to the letter containing the Particulars, Documents and Information (PDI) relating to the unit and the development, for the area breakdown and floor plan relating to the unit you intend to purchase. The Sale and Purchase Agreement contains the entire agreement between the developer and the purchaser and supersedes and cancels in all respects all previous representations, warranties, promises, inducements or statements of intention, whether written or oral made by the developer and/or the developer's agent(s) which are not embodied in the Sale and Purchase Agreement.



Key plan is not drawn to scale.

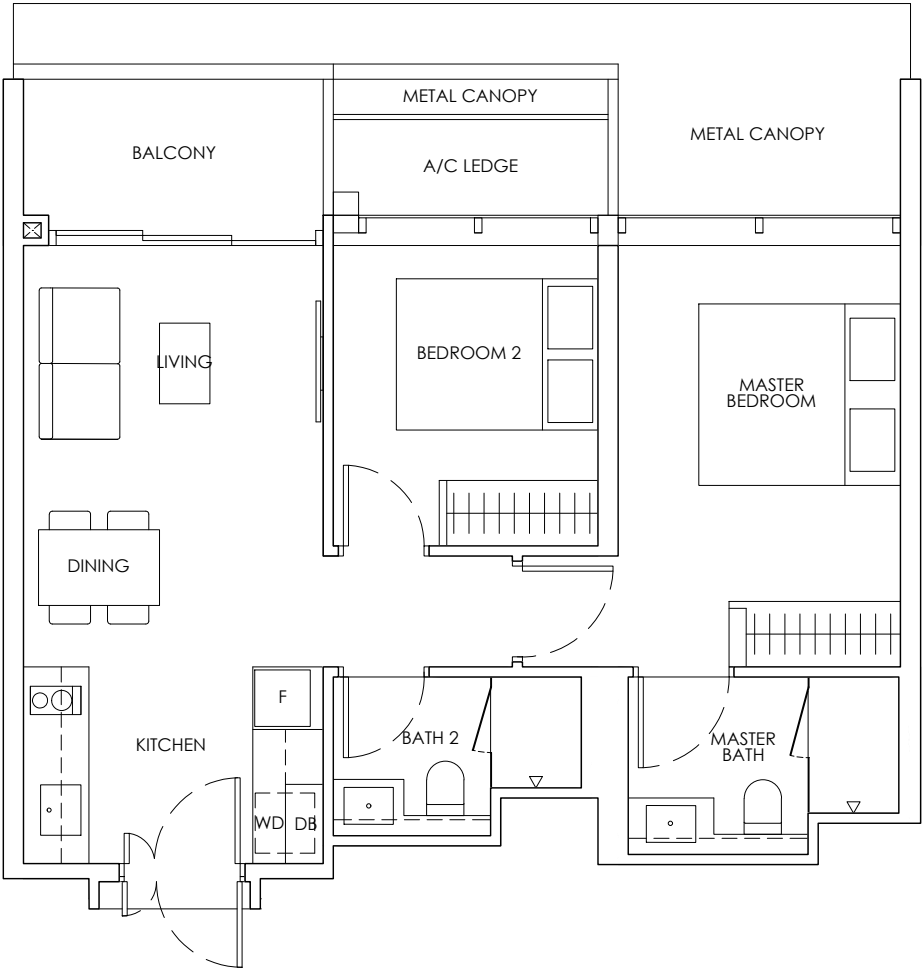
# 2-BEDROOM PREMIUM

Type BP1

64 sq m / 689 sq ft

#25-10 to #27-10

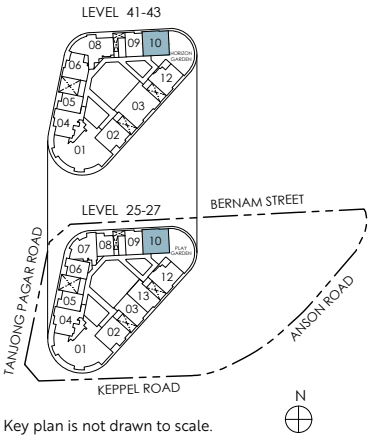
#41-10 to #43-10



Legend (where applicable)

DB	Distribution Board	WD	Washer cum Dryer	W/D	Washer and Dryer	F	Fridge	WC	Water Closet
ST	Storage	HS	Household Shelter	A/C	Air-Conditioner	*	Mirror Image		

Strata area includes air-conditioner (A/C) ledge, balcony and strata void where applicable. Metal canopy is not included in the strata area. All floor plans, areas and measurements stated herein are approximate only and are subject to final survey. Please refer to the key plan for orientation. The plans are subject to change as may be required by the relevant authorities. The balcony shall not be enclosed unless with the approved balcony screen, more particularly illustrated under the header "Approved Balcony Screen". Please refer to the letter containing the Particulars, Documents and Information (PDI) relating to the unit and the development, for the area breakdown and floor plan relating to the unit you intend to purchase. The Sale and Purchase Agreement contains the entire agreement between the developer and the purchaser and supersedes and cancels in all respects all previous representations, warranties, promises, inducements or statements of intention, whether written or oral made by the developer and/or the developer's agent(s) which are not embodied in the Sale and Purchase Agreement.

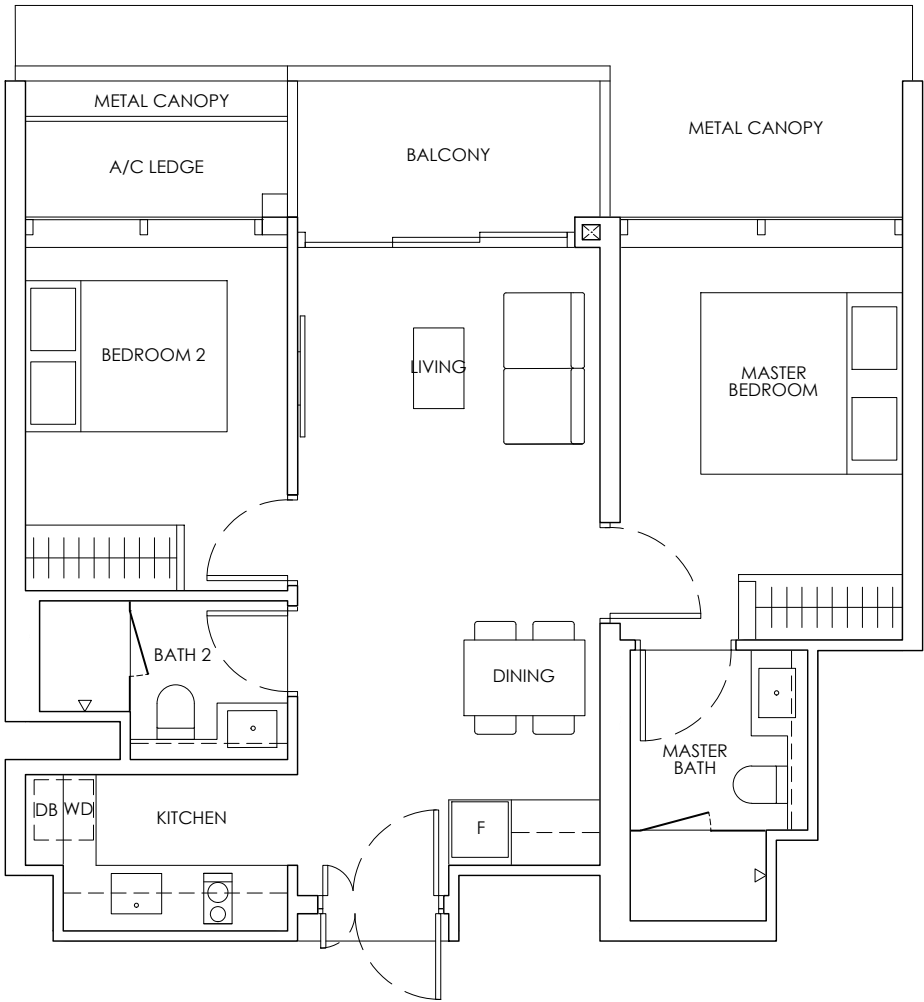


Key plan is not drawn to scale.

# 2-BEDROOM PREMIUM

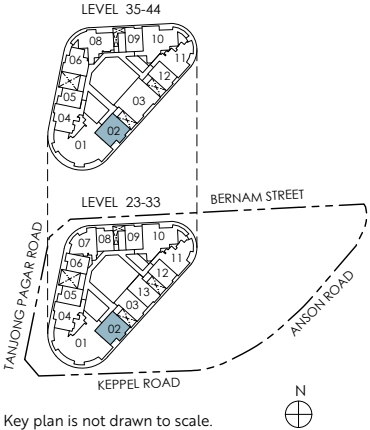
Type BP2  
66 sq m / 710 sq ft

#23-02 to #33-02  
#35-02 to #44-02



Legend (where applicable)									
DB	Distribution Board	WD	Washer cum Dryer	W/D	Washer and Dryer	F	Fridge	WC	Water Closet
ST	Storage	HS	Household Shelter	A/C	Air-Conditioner	*	Mirror Image		

Strata area includes air-conditioner (A/C) ledge, balcony and strata void where applicable. Metal canopy is not included in the strata area. All floor plans, areas and measurements stated herein are approximate only and are subject to final survey. Please refer to the key plan for orientation. The plans are subject to change as may be required by the relevant authorities. The balcony shall not be enclosed unless with the approved balcony screen, more particularly illustrated under the header "Approved Balcony Screen". Please refer to the letter containing the Particulars, Documents and Information (PDI) relating to the unit and the development, for the area breakdown and floor plan relating to the unit you intend to purchase. The Sale and Purchase Agreement contains the entire agreement between the developer and the purchaser and supersedes and cancels in all respects all previous representations, warranties, promises, inducements or statements of intention, whether written or oral made by the developer and/or the developer's agent(s) which are not embodied in the Sale and Purchase Agreement.

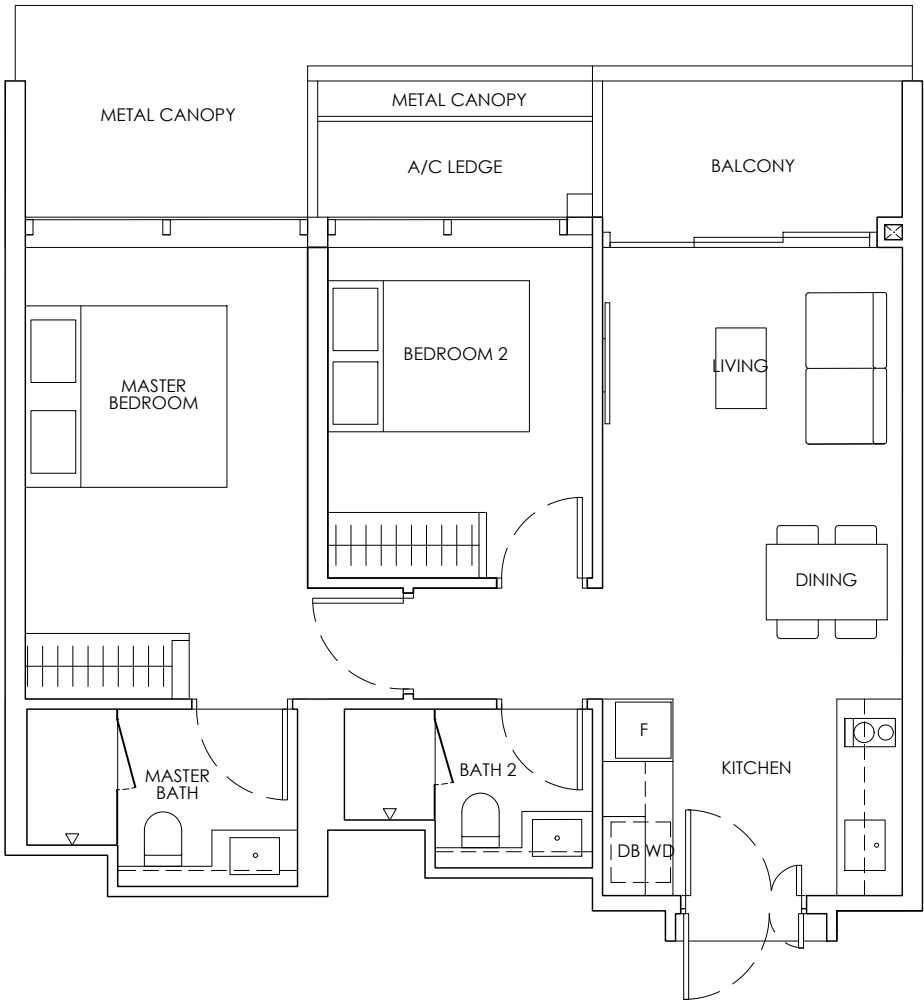


Key plan is not drawn to scale.

# 2-BEDROOM PREMIUM

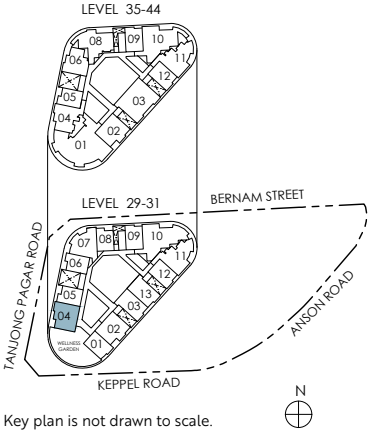
Type BP3  
66 sq m / 710 sq ft

#29-04 to #31-04



Legend (where applicable)									
DB	Distribution Board	WD	Washer cum Dryer	W/D	Washer and Dryer	F	Fridge	WC	Water Closet
ST	Storage	HS	Household Shelter	A/C	Air-Conditioner	*	Mirror Image		

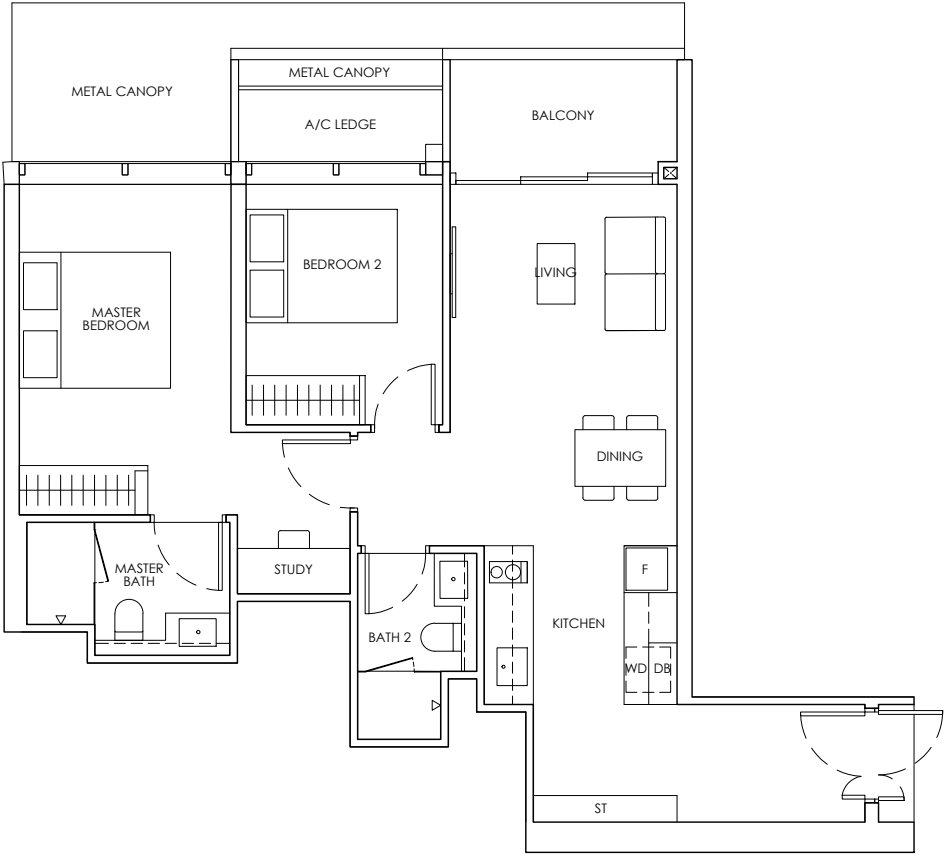
Strata area includes air-conditioner (A/C) ledge, balcony and strata void where applicable. Metal canopy is not included in the strata area. All floor plans, areas and measurements stated herein are approximate only and are subject to final survey. Please refer to the key plan for orientation. The plans are subject to change as may be required by the relevant authorities. The balcony shall not be enclosed unless with the approved balcony screen, more particularly illustrated under the header "Approved Balcony Screen". Please refer to the letter containing the Particulars, Documents and Information (PDI) relating to the unit and the development, for the area breakdown and floor plan relating to the unit you intend to purchase. The Sale and Purchase Agreement contains the entire agreement between the developer and the purchaser and supersedes and cancels in all respects all previous representations, warranties, promises, inducements or statements of intention, whether written or oral made by the developer and/or the developer's agent(s) which are not embodied in the Sale and Purchase Agreement.



# 2-BEDROOM PREMIUM + ENSUITE STUDY

Type BPS1  
76 sq m / 818 sq ft

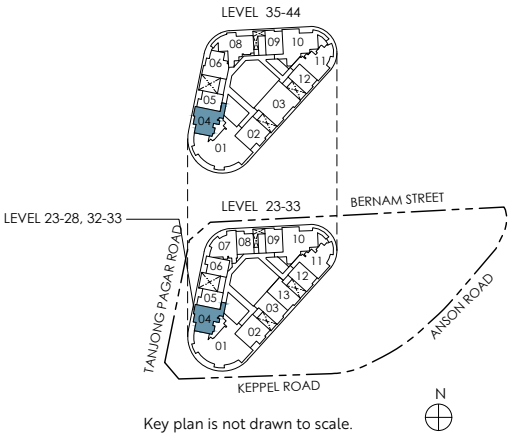
#23-04 to #28-04  
#32-04 to #33-04  
#35-04 to #44-04



Legend (where applicable)

DB	Distribution Board	WD	Washer cum Dryer	W/D	Washer and Dryer	F	Fridge	WC	Water Closet
ST	Storage	HS	Household Shelter	A/C	Air-Conditioner	*	Mirror Image		

Strata area includes air-conditioner (A/C) ledge, balcony and strata void where applicable. Metal canopy is not included in the strata area. All floor plans, areas and measurements stated herein are approximate only and are subject to final survey. Please refer to the key plan for orientation. The plans are subject to change as may be required by the relevant authorities. The balcony shall not be enclosed unless with the approved balcony screen, more particularly illustrated under the header "Approved Balcony Screen". Please refer to the letter containing the Particulars, Documents and Information (PDI) relating to the unit and the development, for the area breakdown and floor plan relating to the unit you intend to purchase. The Sale and Purchase Agreement contains the entire agreement between the developer and the purchaser and supersedes and cancels in all respects all previous representations, warranties, promises, inducements or statements of intention, whether written or oral made by the developer and/or the developer's agent(s) which are not embodied in the Sale and Purchase Agreement.



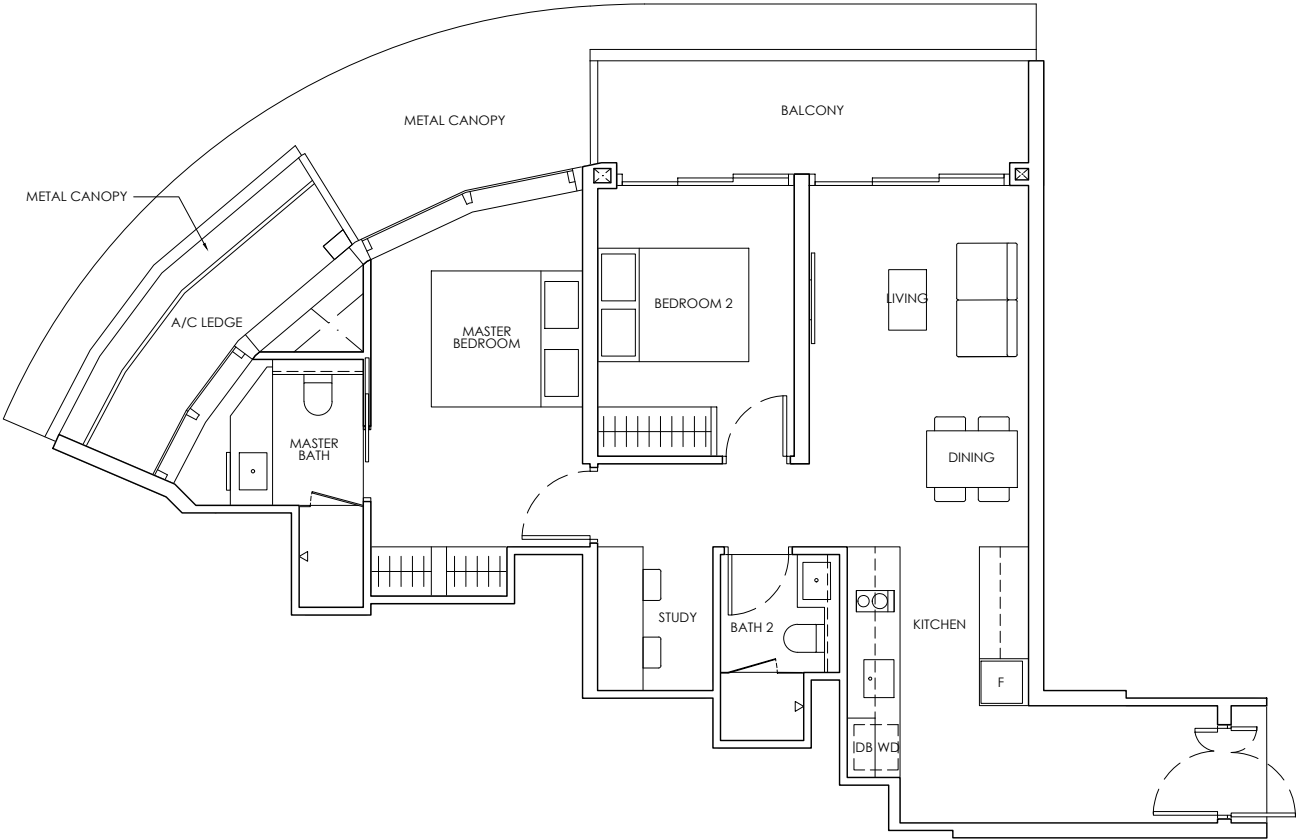
Key plan is not drawn to scale.



# 2-BEDROOM PREMIUM + STUDY

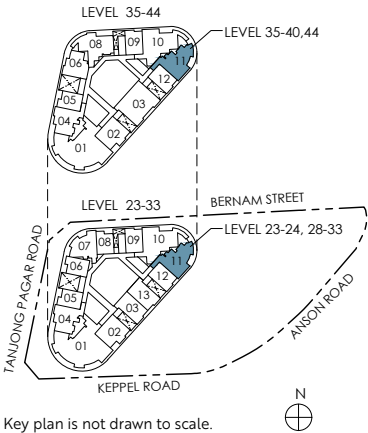
Type BPS2  
86 sq m / 926 sq ft

#23-11 to #24-11  
#28-11 to #33-11  
#35-11 to #40-11  
#44-11



Legend (where applicable)									
DB	Distribution Board	WD	Washer cum Dryer	W/D	Washer and Dryer	F	Fridge	WC	Water Closet
ST	Storage	HS	Household Shelter	A/C	Air-Conditioner	*	Mirror Image		

Strata area includes air-conditioner (A/C) ledge, balcony and strata void where applicable. Metal canopy is not included in the strata area. All floor plans, areas and measurements stated herein are approximate only and are subject to final survey. Please refer to the key plan for orientation. The plans are subject to change as may be required by the relevant authorities. The balcony shall not be enclosed unless with the approved balcony screen, more particularly illustrated under the header "Approved Balcony Screen". Please refer to the letter containing the Particulars, Documents and Information (PDI) relating to the unit and the development, for the area breakdown and floor plan relating to the unit you intend to purchase. The Sale and Purchase Agreement contains the entire agreement between the developer and the purchaser and supersedes and cancels in all respects all previous representations, warranties, promises, inducements or statements of intention, whether written or oral made by the developer and/or the developer's agent(s) which are not embodied in the Sale and Purchase Agreement.



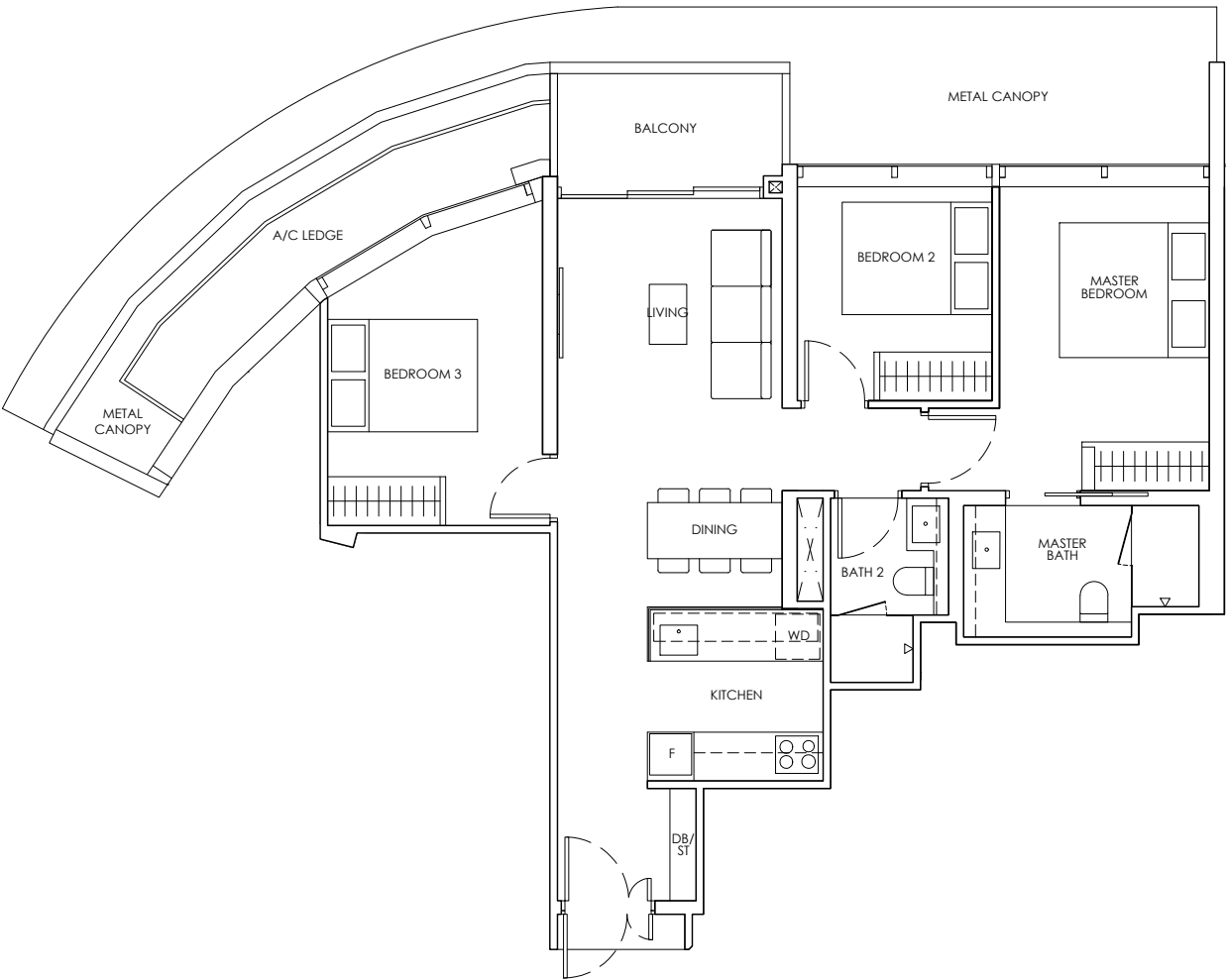
Key plan is not drawn to scale.



# 3-BEDROOM

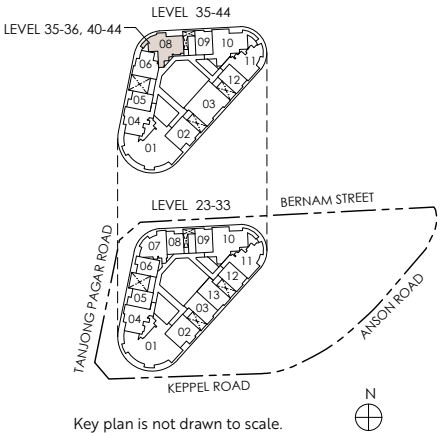
Type C1  
91 sq m / 980 sq ft

#35-08 to #36-08  
#40-08 to #44-08



Legend (where applicable)									
DB	Distribution Board	WD	Washer cum Dryer	W/D	Washer and Dryer	F	Fridge	WC	Water Closet
ST	Storage	HS	Household Shelter	A/C	Air-Conditioner	*	Mirror Image		

Strata area includes air-conditioner (A/C) ledge, balcony and strata void where applicable. Metal canopy is not included in the strata area. All floor plans, areas and measurements stated herein are approximate only and are subject to final survey. Please refer to the key plan for orientation. The plans are subject to change as may be required by the relevant authorities. The balcony shall not be enclosed unless with the approved balcony screen, more particularly illustrated under the header "Approved Balcony Screen". Please refer to the letter containing the Particulars, Documents and Information (PDI) relating to the unit and the development, for the area breakdown and floor plan relating to the unit you intend to purchase. The Sale and Purchase Agreement contains the entire agreement between the developer and the purchaser and supersedes and cancels in all respects all previous representations, warranties, promises, inducements or statements of intention, whether written or oral made by the developer and/or the developer's agent(s) which are not embodied in the Sale and Purchase Agreement.



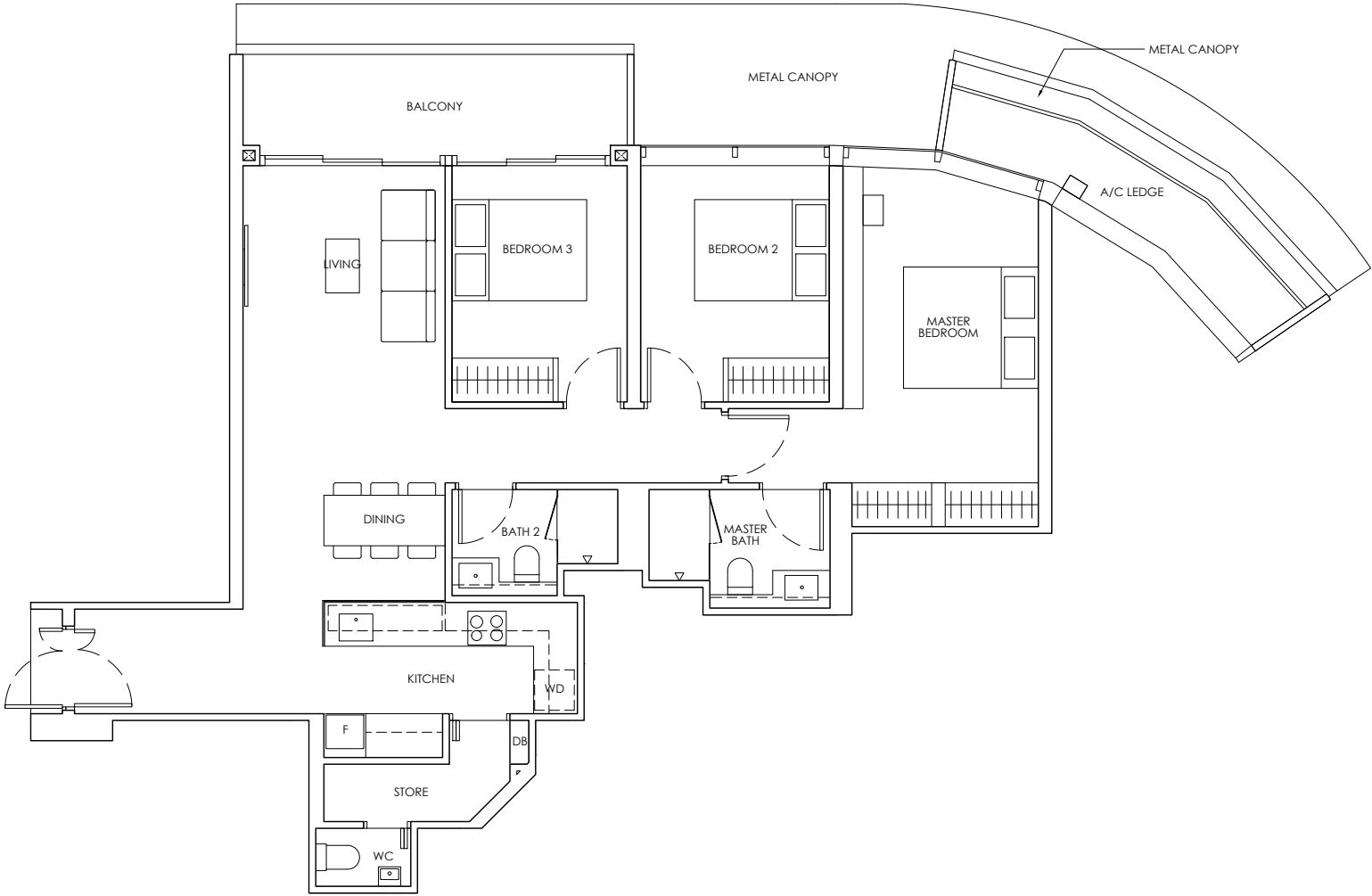
Key plan is not drawn to scale.



# 3-BEDROOM PREMIUM

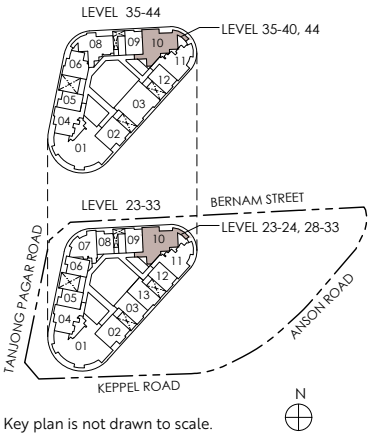
Type CPI  
112 sq m / 1206 sq ft

#23-10 to #24-10  
#28-10 to #33-10  
#35-10 to #40-10  
#44-10



Legend (where applicable)									
DB	Distribution Board	WD	Washer cum Dryer	W/D	Washer and Dryer	F	Fridge	WC	Water Closet
ST	Storage	HS	Household Shelter	A/C	Air-Conditioner	*	Mirror Image		

Strata area includes air-conditioner (A/C) ledge, balcony and strata void where applicable. Metal canopy is not included in the strata area. All floor plans, areas and measurements stated herein are approximate only and are subject to final survey. Please refer to the key plan for orientation. The plans are subject to change as may be required by the relevant authorities. The balcony shall not be enclosed unless with the approved balcony screen, more particularly illustrated under the header "Approved Balcony Screen". Please refer to the letter containing the Particulars, Documents and Information (PDI) relating to the unit and the development, for the area breakdown and floor plan relating to the unit you intend to purchase. The Sale and Purchase Agreement contains the entire agreement between the developer and the purchaser and supersedes and cancels in all respects all previous representations, warranties, promises, inducements or statements of intention, whether written or oral made by the developer and/or the developer's agent(s) which are not embodied in the Sale and Purchase Agreement.



Key plan is not drawn to scale.

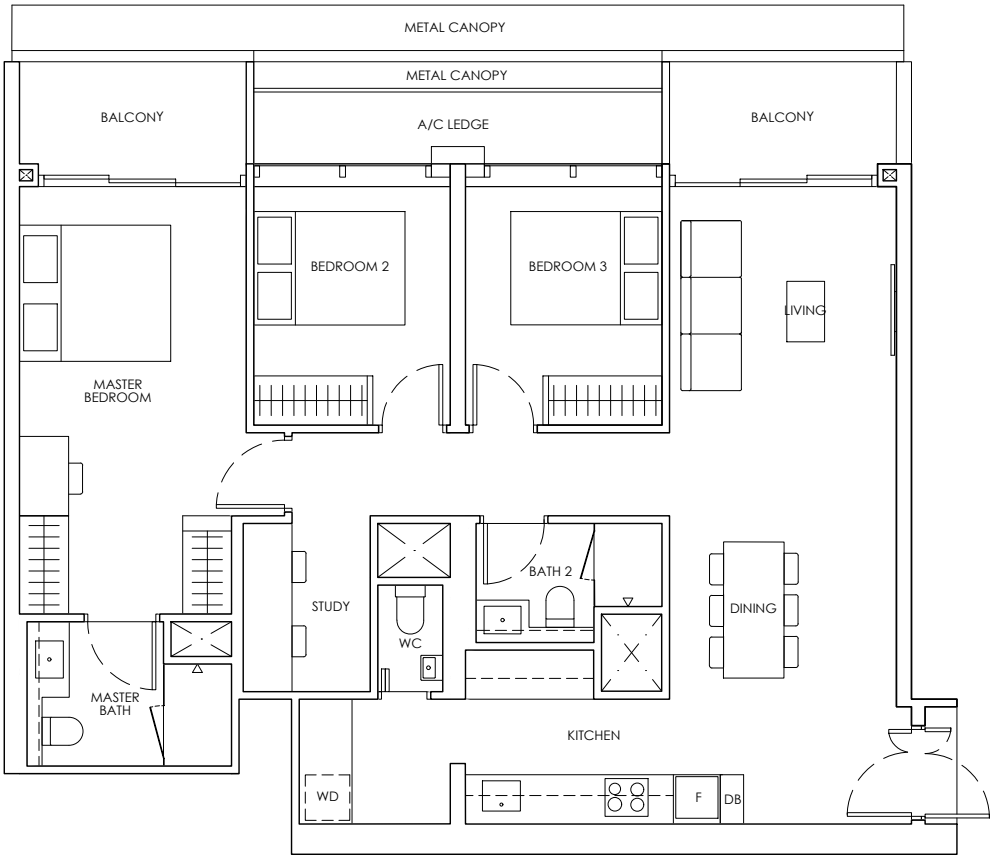




# 3-BEDROOM PREMIUM + STUDY

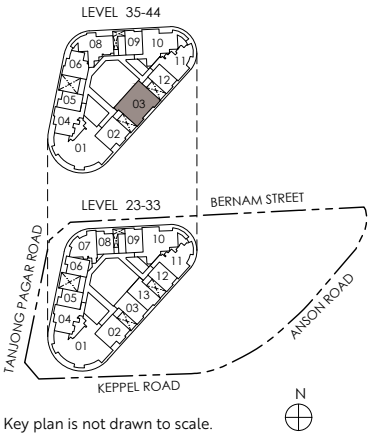
Type CPS1  
114 sq m / 1227 sq ft

#35-03 to #44-03



Legend (where applicable)									
DB	Distribution Board	WD	Washer cum Dryer	W/D	Washer and Dryer	F	Fridge	WC	Water Closet
ST	Storage	HS	Household Shelter	A/C	Air-Conditioner	*	Mirror Image		

Strata area includes air-conditioner (A/C) ledge, balcony and strata void where applicable. Metal canopy is not included in the strata area. All floor plans, areas and measurements stated herein are approximate only and are subject to final survey. Please refer to the key plan for orientation. The plans are subject to change as may be required by the relevant authorities. The balcony shall not be enclosed unless with the approved balcony screen, more particularly illustrated under the header "Approved Balcony Screen". Please refer to the letter containing the Particulars, Documents and Information (PDI) relating to the unit and the development, for the area breakdown and floor plan relating to the unit you intend to purchase. The Sale and Purchase Agreement contains the entire agreement between the developer and the purchaser and supersedes and cancels in all respects all previous representations, warranties, promises, inducements or statements of intention, whether written or oral made by the developer and/or the developer's agent(s) which are not embodied in the Sale and Purchase Agreement.



Key plan is not drawn to scale.

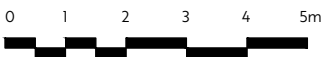
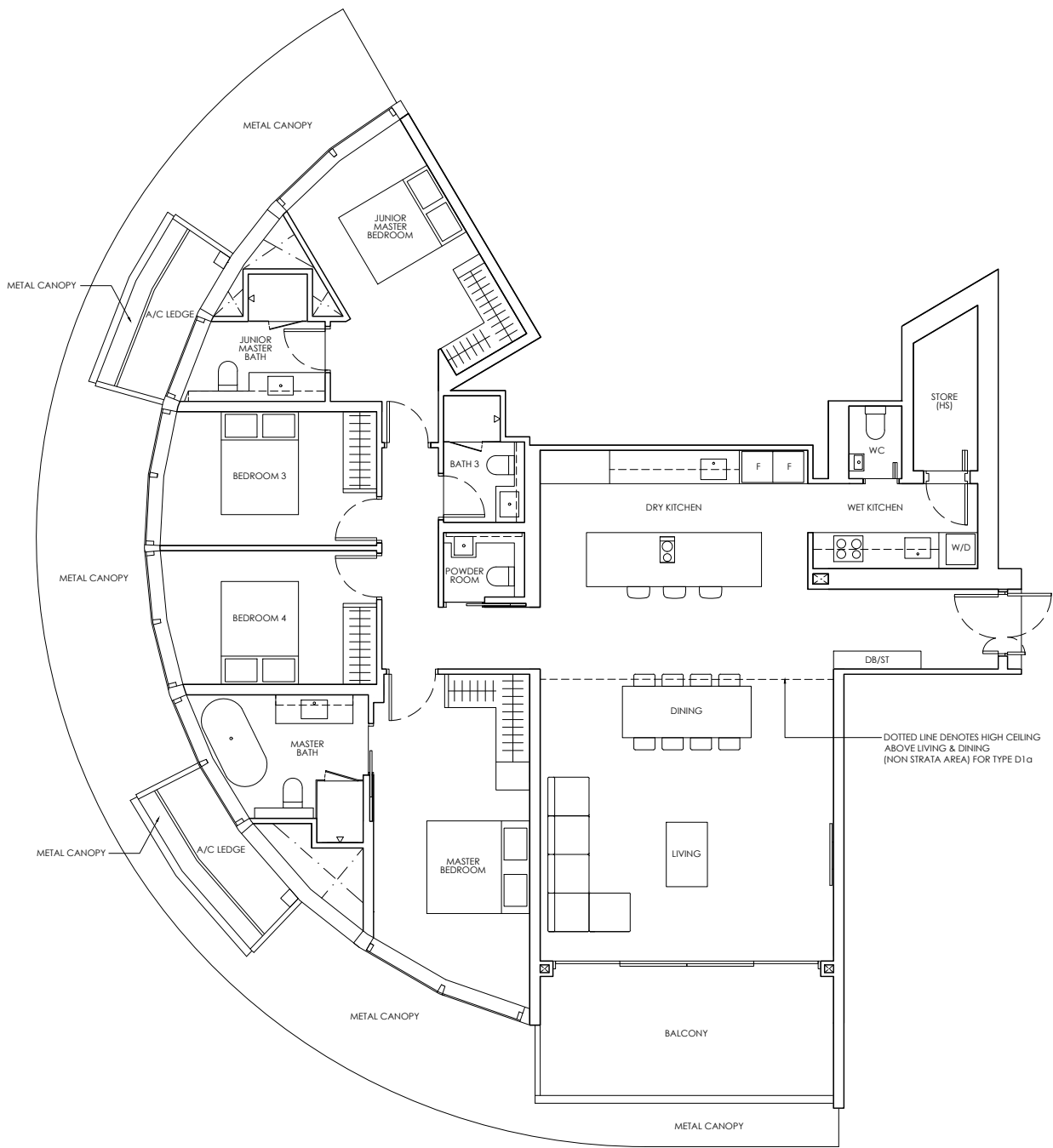
# 4-BEDROOM PREMIUM

**Type D1**  
**192 sq m / 2067 sq ft**

#23-01 to #27-01  
#32-01 to #33-01  
#35-01 to #44-01

**Type D1a**  
**192 sq m / 2067 sq ft**

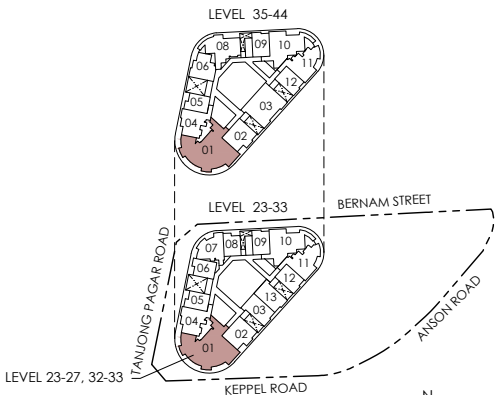
#28-01



**Legend (where applicable)**

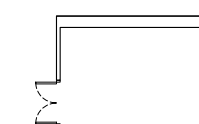
<b>DB</b> Distribution Board	<b>WD</b> Washer cum Dryer	<b>W/D</b> Washer and Dryer	<b>F</b> Fridge	<b>WC</b> Water Closet
<b>ST</b> Storage	<b>HS</b> Household Shelter	<b>A/C</b> Air-Conditioner	<b>*</b> Mirror Image	

Strata area includes air-conditioner (A/C) ledge, balcony and strata void where applicable. Metal canopy is not included in the strata area. All floor plans, areas and measurements stated herein are approximate only and are subject to final survey. Please refer to the key plan for orientation. The plans are subject to change as may be required by the relevant authorities. The balcony shall not be enclosed unless with the approved balcony screen, more particularly illustrated under the header "Approved Balcony Screen". Please refer to the letter containing the Particulars, Documents and Information (PDI) relating to the unit and the development, for the area breakdown and floor plan relating to the unit you intend to purchase. The Sale and Purchase Agreement contains the entire agreement between the developer and the purchaser and supersedes and cancels in all respects all previous representations, warranties, promises, inducements or statements of intention, whether written or oral made by the developer and/or the developer's agent(s) which are not embodied in the Sale and Purchase Agreement.



Key plan is not drawn to scale.

#45-01



SPH-PL


--	--

